

LEVEL 1

UNIT 1 (UNIT 6 MIRRORED)

SPECIFICATIONS

UNIT 161m²

PATIO 123m²

CARPARK 13m² x2

STORAGE 8m²



FLOORPLAN

Whilst all care has been taken in the preparation of this brochure, the particulars are not to be construed as containing any representation of the facts upon which any interested party is entitled to rely. Floor plans are correct at the time of printing, but are subject to change. All interested parties should make their own enquiries to the agent. ©2008

KEY

- 1 Entry
- 2 Laundry
- 3 Bath
- 4 Ensuite
- 5 WIR
- 6 Bed 1
- 7 Bed 2
- 8 Bed 3
- 9 Living
- 10 Dining
- 11 Kitchen
- 12 Family
- 13 Balcony
- 14 Linen
- 15 Powder Room
- 16 Patio
- 17 Landscaping

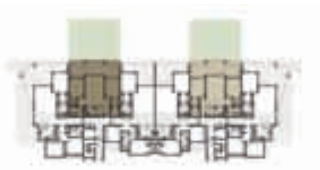


LEVEL 1

UNIT 2 (UNIT 5 MIRRORED)

SPECIFICATIONS

UNIT	110m ²
PATIO	47m ²
CARPARK	13m ²
STORAGE	3m ²



FLOORPLAN

Whilst all care has been taken in the preparation of this brochure, the particulars are not to be construed as containing any representation of the facts upon which any interested party is entitled to rely. Floor plans are correct at the time of printing, but are subject to change. All interested parties should make their own enquiries to the agent. ©2008

KEY

- 1 Entry
- 2 Laundry
- 3 Bath
- 4 Ensuite
- 5 WIR
- 6 Bed 1
- 7 Bed 2
- 8 Bed 3
- 9 Living
- 10 Dining
- 11 Kitchen
- 12 Family
- 13 Balcony
- 14 Linen
- 15 Powder Room
- 16 Patio
- 17 Landscaping



LEVEL 1

UNIT 3 (UNIT 4 MIRRORED)

SPECIFICATIONS

UNIT	158m ²
PATIO ¹	37m ²
PATIO ²	37m ²
CARPARK	13m ² x2
STORAGE	6m ²



FLOORPLAN

Whilst all care has been taken in the preparation of this brochure, the particulars are not to be construed as containing any representation of the facts upon which any interested party is entitled to rely. Floor plans are correct at the time of printing, but are subject to change. All interested parties should make their own enquiries to the agent. ©2008

KEY

- 1 Entry
- 2 Laundry
- 3 Bath
- 4 Ensuite
- 5 WIR
- 6 Bed 1
- 7 Bed 2
- 8 Bed 3
- 9 Living
- 10 Dining
- 11 Kitchen
- 12 Family
- 13 Balcony
- 14 Linen
- 15 Powder Room
- 16 Patio
- 17 Landscaping



LEVEL 2 & 3

UNIT 7 & 13 (UNIT 12 & 18 MIRRORED)

SPECIFICATIONS

UNIT 161m²

PATIO¹ 48m²

CARPARK 13m² x2

STORAGE^{7, 12, 13} 6m²

STORAGE¹⁸ 7m²



FLOORPLAN

Whilst all care has been taken in the preparation of this brochure, the particulars are not to be construed as containing any representation of the facts upon which any interested party is entitled to rely. Floor plans are correct at the time of printing, but are subject to change. All interested parties should make their own enquiries to the agent. ©2008

KEY

- 1 Entry
- 2 Laundry
- 3 Bath
- 4 Ensuite
- 5 WIR
- 6 Bed 1
- 7 Bed 2
- 8 Bed 3
- 9 Living
- 10 Dining
- 11 Kitchen
- 12 Family
- 13 Balcony
- 14 Linen
- 15 Powder Room
- 16 Patio
- 17 Landscaping



LEVEL 2 & 3

UNIT 8 & 14 (UNIT 11 & 17 MIRRORED)

SPECIFICATIONS

UNIT	110m ²
BALCONY	37m ²
CARPARK	13m ²
STORAGE	3m ²



FLOORPLAN

Whilst all care has been taken in the preparation of this brochure, the particulars are not to be construed as containing any representation of the facts upon which any interested party is entitled to rely. Floor plans are correct at the time of printing, but are subject to change. All interested parties should make their own enquiries to the agent. ©2008

KEY

- 1 Entry
- 2 Laundry
- 3 Bath
- 4 Ensuite
- 5 WIR
- 6 Bed 1
- 7 Bed 2
- 8 Bed 3
- 9 Living
- 10 Dining
- 11 Kitchen
- 12 Family
- 13 Balcony
- 14 Linen
- 15 Powder Room
- 16 Patio
- 17 Landscaping

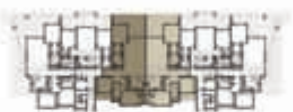


LEVEL 2 & 3

UNIT 9 & 15 (UNIT 10 & 16 MIRRORED)

SPECIFICATIONS

UNIT	158m ²
BALCONY ¹	30m ²
BALCONY ²	6m ²
CARPARK	13m ² x2
STORAGE ¹⁸	6m ²



FLOORPLAN

Whilst all care has been taken in the preparation of this brochure, the particulars are not to be construed as containing any representation of the facts upon which any interested party is entitled to rely. Floor plans are correct at the time of printing, but are subject to change. All interested parties should make their own enquiries to the agent. ©2008

KEY

- 1 Entry
- 2 Laundry
- 3 Bath
- 4 Ensuite
- 5 WIR
- 6 Bed 1
- 7 Bed 2
- 8 Bed 3
- 9 Living
- 10 Dining
- 11 Kitchen
- 12 Family
- 13 Balcony
- 14 Linen
- 15 Powder Room
- 16 Patio
- 17 Landscaping



LEVEL 4

UNIT 19 (UNIT 22 MIRRORED)

SPECIFICATIONS

UNIT 208m²

BALCONY¹ 72m²

CARPARK 13m² x2

STORAGE¹⁹ 14m²

STORAGE²² 12m²



FLOORPLAN

Whilst all care has been taken in the preparation of this brochure, the particulars are not to be construed as containing any representation of the facts upon which any interested party is entitled to rely. Floor plans are correct at the time of printing, but are subject to change. All interested parties should make their own enquiries to the agent. ©2008

KEY

- 1 Entry
- 2 Laundry
- 3 Bath
- 4 Ensuite
- 5 WIR
- 6 Bed 1
- 7 Bed 2
- 8 Bed 3
- 9 Living
- 10 Dining
- 11 Kitchen
- 12 Family
- 13 Balcony
- 14 Linen
- 15 Powder Room
- 16 Patio
- 17 Landscaping



LEVEL 4

UNIT 20 (UNIT 21 MIRRORED)

SPECIFICATIONS

UNIT 203m²

BALCONY¹ 55m²

BALCONY² 6m²

CARPARK 13m² x2

STORAGE²⁰ 7m²

STORAGE²¹ 6m²



FLOORPLAN

Whilst all care has been taken in the preparation of this brochure, the particulars are not to be construed as containing any representation of the facts upon which any interested party is entitled to rely. Floor plans are correct at the time of printing, but are subject to change. All interested parties should make their own enquiries to the agent. ©2008

KEY

- 1 Entry
- 2 Laundry
- 3 Bath
- 4 Ensuite
- 5 WIR
- 6 Bed 1
- 7 Bed 2
- 8 Bed 3
- 9 Living
- 10 Dining
- 11 Kitchen
- 12 Family
- 13 Balcony
- 14 Linen
- 15 Powder Room
- 16 Patio
- 17 Landscaping

